

Updating CitiDISK DV, HDV & HD Firmware version 1.94 (Windows only)

Identify the unit and firmware

Firmware is the software embedded inside the CitiDISK's and it is automatically loaded while the unit is powered on. There is no need to update it each time. However, users are urged to check www.shining.com frequently for the latest firmware updates. The firmware is conventionally named as

“FW1256HD(HVX200)-oxfw911-12052006.bin” for CitiDISK HD

Or

“FW1256H-oxfw911-01242007+rom+rom2Release.bin” for CitiDISK HDV

Or

“FW1256C-oxfw911-01242007+rom+rom2Release.bin” for CitiDISK DV

Or

“FW1256C50-oxfw911-05222007+rom+rom2Release.bin” for CitiDISK DV50



User must first identify the unit's model number, which is written on the label at the bottom of the unit. Match the firmware to the numbers that make up the first portion of the model number; DO NOT MIX. Take note that “FW1256C....” firmware is applicable to FW1256B, FW1256C models and “FW1256H...” firmware is applicable for “FW1256H” models. And, “FW1256HD (HVX200)...” is applicable to CitiDISK HD FW1256HD (VX200) or FW1256HD (Rx) model only.

The first 8 digits preceding the hyphen represent the model. The digits that make up the center portion represent the CPU-model and firmware, and the final eight digits represent the date, in this case, December 5, 2006. If the file is in compressed form, users must first un-compress it and then select the un-compressed file as the target. The un-compressed file will have the exact same name, except with the “bin” extension.

Here are the suggested procedures to upgrade internal firmware for CitiDISK HDV or HD unit. Users MUST proceed with caution and follow steps described below; otherwise, and the firmware can be damaged resulting non-functional unit.

- 1). First, uninstall previous versions of Uploaded.
- 2). Install the “Firmware Uploader”. The firmware uploader is included as a CD, or users can download it from www.shining.com. File name is “CitiDISK-HDV-HD-Firmware-Uploader-v194.zip”. Again, it is in ZIP format, and needs to be unzipped. After the files have been extracted, run the “setup” program found inside the folder.



If you have already completed this step, there is no need to repeat it. Proceed to step 2.

3). Connect the CitiDISK HDV/HD unit into a Windows System XP/SP2 using the FireWire cable.

4). Press the CitiDISK HDV/DV/HD power button. Wait for approximately 20 seconds.

5). Users MUST click on the “Plug-n-Play” or “Safely Eject Device” icon at the bottom right corner of the tool bar before uploading the CitiDISK’s firmware. Select the drive that you wish to eject, as illustrated below:




Once the system completes the update of the registry and other components, the message below will appear, indicating that it is now safe to un-plug the CitiDISK unit. Click on “OK” to continue.



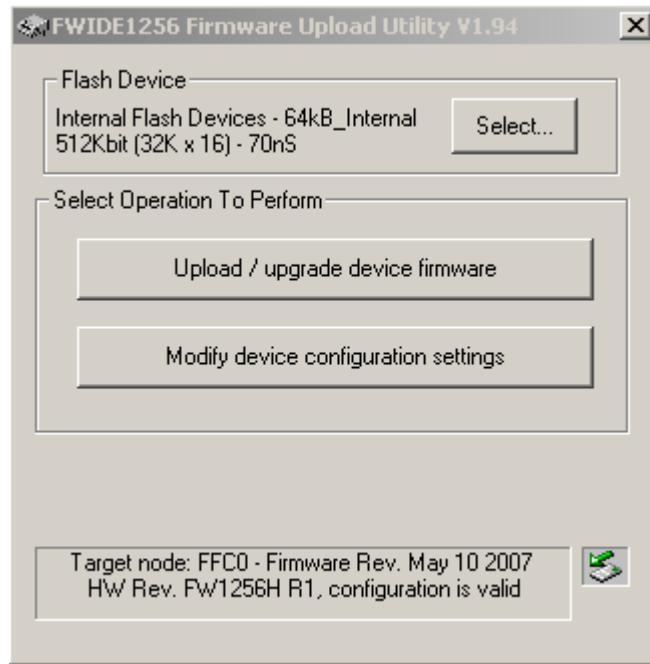
Do NOT disconnect the Firewire cable from the system. Additionally, leave the CitiDISK powered on. Wait for another 20 seconds until CitiDISK unit re-synchronizes itself to the system.

Make sure that there are no other processes underway, then close all of the files in the CitiDISK, and proceed to the next steps.



6). After “Firmware Uploader” is installed, find the  icon on the desktop and double-click it to launch the “Firmware Uploader.” The following is a sample illustration of this page. Note that the uploader version number is indicated at the top. In this case, it is “v1.93” – the latest version. The currently installed firmware date code will show at the bottom.





Note: For CitiDISK HD user, you might find “HW Rev. FW1256HD (R2) or (R3) configuration is valid” message instead of “FW1256HD (VX200)” which is R1. All are applicable for this FW1256HD (R4) release. Above example is “FW1256H R1” which is CitiDISK HDV, and CitiDISK DV will find “FW1256C” or “FW1256C50”.

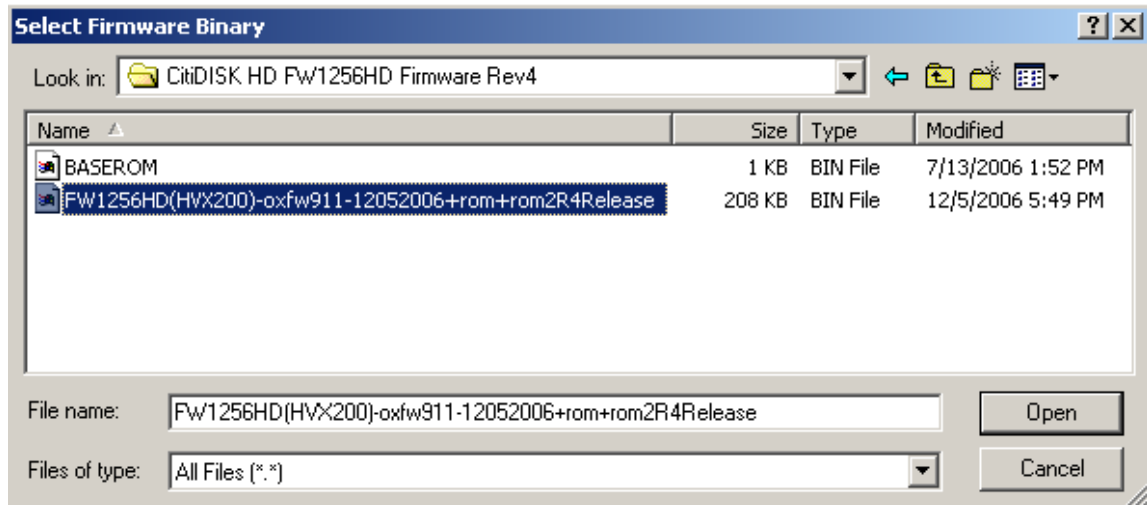
- 7). Start the process by clicking on the “**Upload / Upgrade Device Firmware**” button. Follow the instructions, and the system will ask for the firmware target. Select the firmware file you have just download and make sure that it has been unzipped and uncompressed. User can select “Detail” on the “**View Menu**” to have a detailed view of the files. See the following example:



Select the file named

“FW1256HD (HVX200)-oxfw911-12052006+rom+rom2R4Release.bin”

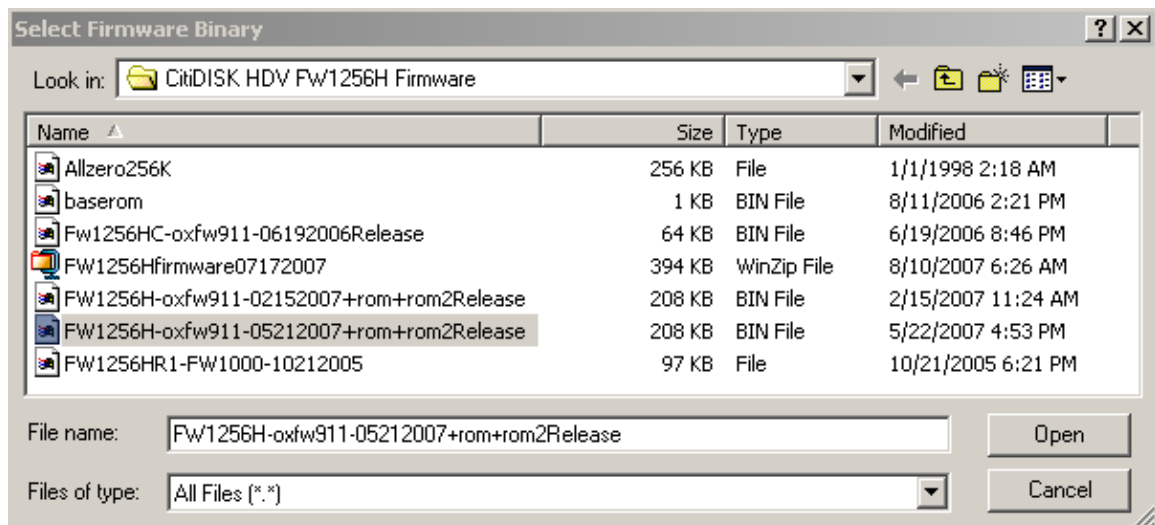
For CitiDISK HD.



OR

“FW1256HC-oxfw911-05212007+rom+rom2Release.bin”

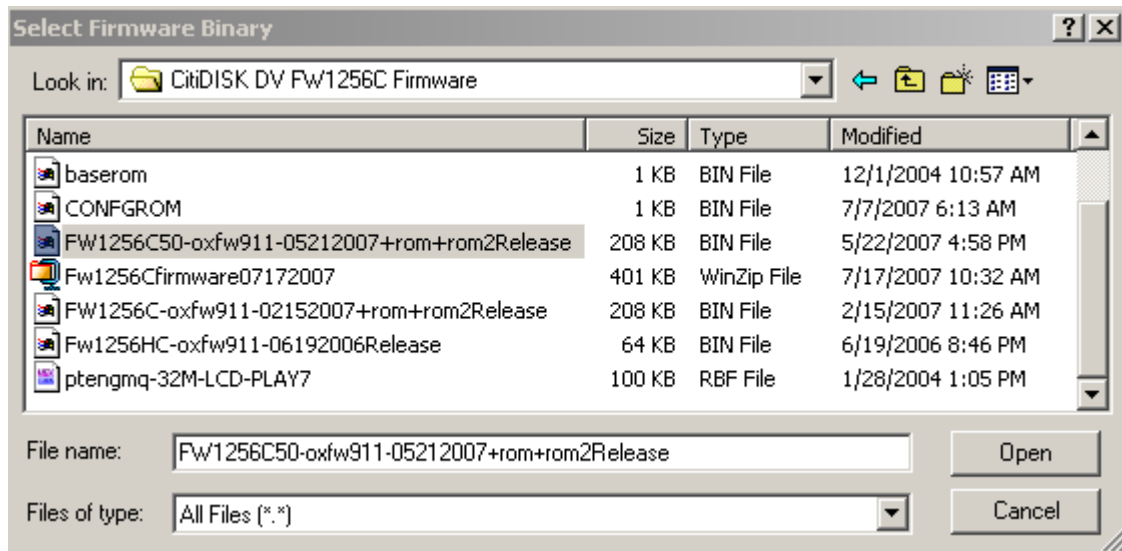
For CitiDISK HDV.



OR

“FW1256C50-oxfw911-05212007+rom+rom2Release.bin”

For CitiDISK DV.



The file should show up with the “binary” or “bin” file extension. Click “Open” to continue. Next messages will show up in the status bar indicating the uploader is:

“Downloading Configuration”

“Erasing Firmware”

“Uploading Firmware”

“Uploading Configuration”

“Uploading ROM Data”

“Erasing ROM2 Data”

“Uploading ROM2 Data”.

“Finalizing the update”

“Ready”

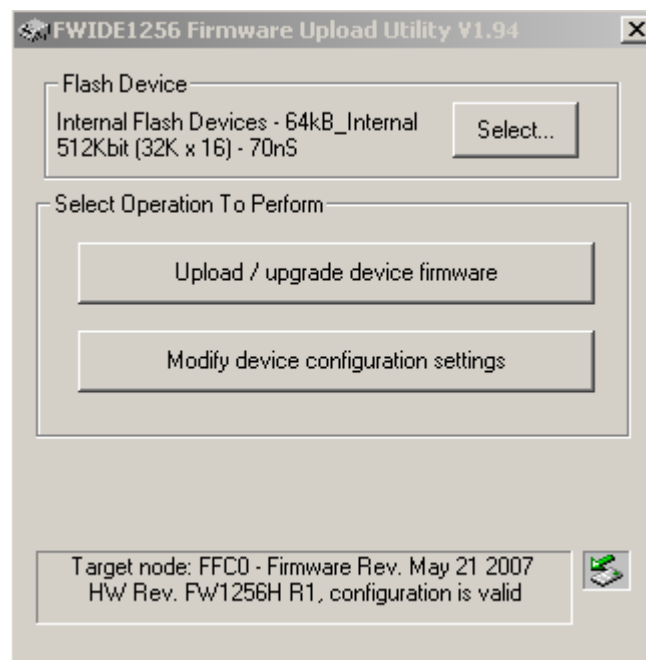
The whole process takes approximate 2 minutes. Once the firmware uploading process is nearly completed (“**Finalizing the update**” shown on the status bar), the new firmware will take another 18 seconds to activate and re-examine the settings already registered in the unit. User may find that both the RED and GREEN lights go off and blink rapidly for about 5 seconds, and then both lights will blink back and forth. Finally, the CitiDISK will re-sync itself to the system and GREEN become solid again just as if you’ve re-plugged the CitiDISK back into system.



Before Modifying CitiDISK HDV/DV/HD's Device Configuration Setting (Windows only)

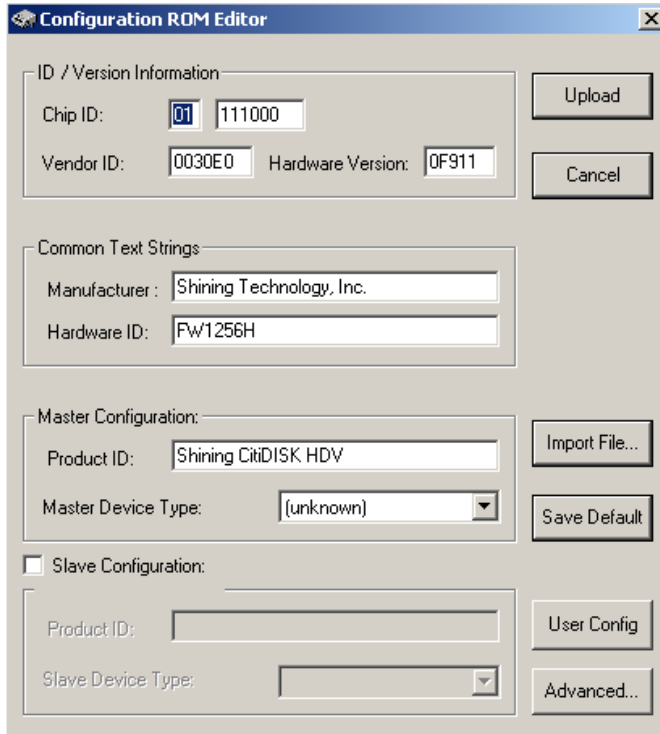
Now it's time to re-examine the setting whether is changed or not. Exit the uploader first, do another "Safely eject" the CitiDISK from system once again. Power off the CitiDISK and power it back on again. Wait for 10 seconds and let the CitiDISK to re-sync with system. Do another "Safely eject" the CitiDISK from system again. Wait for 10 seconds. Start the Uploader again. You should find the new configuration and latest firmware date illustrated in the picture.

Next is to examine and possible change the setting which may be altered in above process.



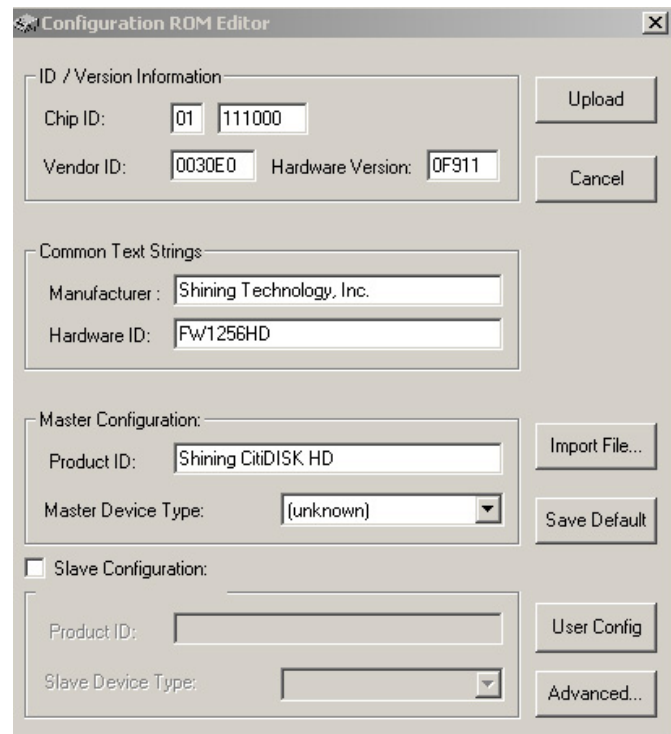
Modifying CitiDISK HDV/DV/HD's Device Configuration Setting (Windows only)

8). Start the process by clicking on the “**Modify device configuration setting**” button. For the most part, the configuration settings are preset and there is no need to adjust anything except for the elements in the “**User Config**” sub-menu.

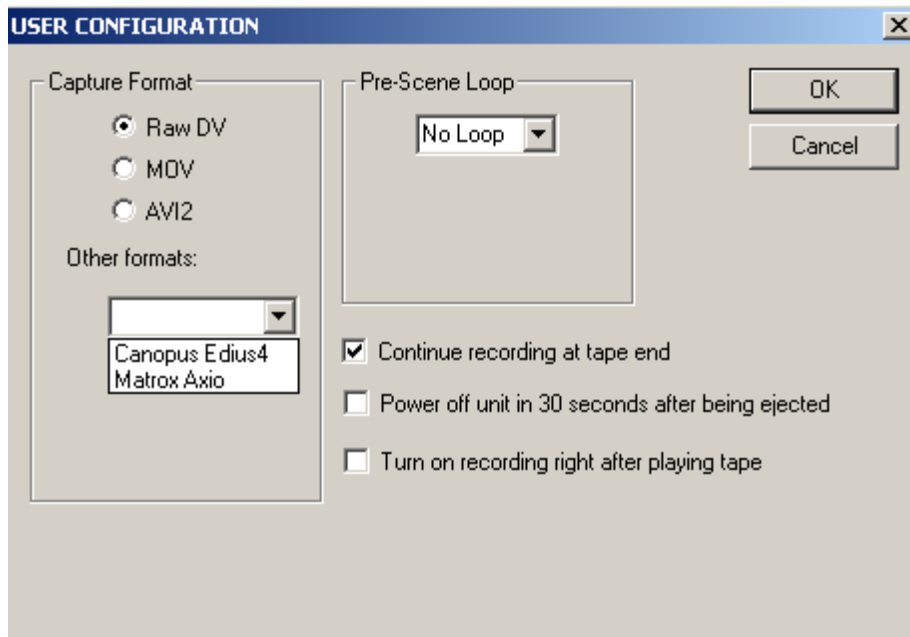


Top – configuration setting for CitiDISK HDV

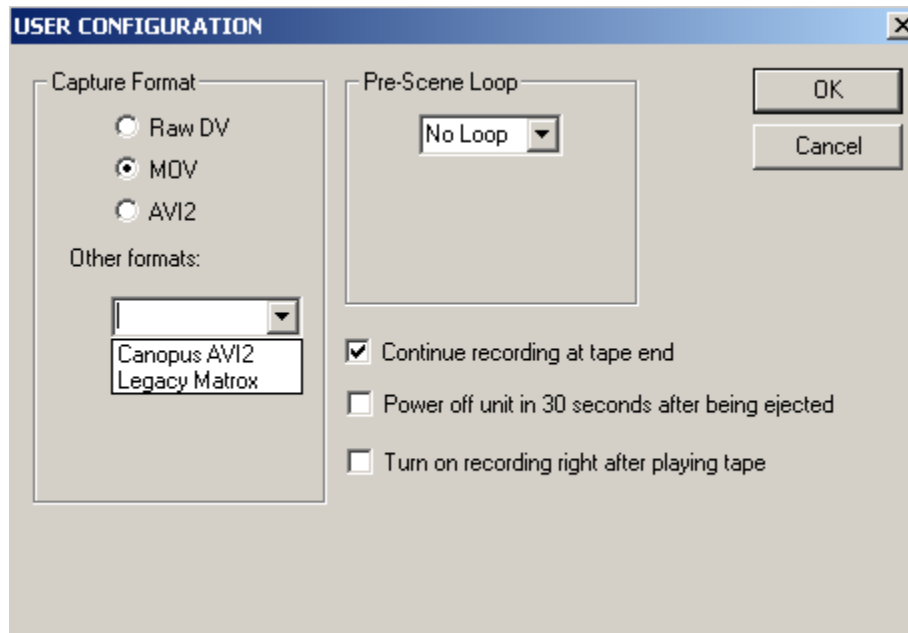
Right – configuration setting for CitiDISK HD



Click on “**User Config**” to display the next screen for CitiDISK HD.



Click on “**User Config**” to display the next screen for CitiDISK HDV.



The “**Capture format**” column displays the current capture format. This is where the setting can be changed.

Under “other formats” are listed the file formats that are not commonly used, but are still supported by the software. There are two user-definable formats available for



selection (“Canopus Edius4” or “Matrox Axio”). The user is urged to check the manufacturer website for new formats and firmware updates.

Note: Must have Canopus Edius4 installed and USB dongle from Canopus if “Canopus Edius4” selected. For Matrox Axio user must have Adobe Premier 2.0 and necessary Matrox Axio hardware/software supported by Matrox. For MOV (QuickTime) user must have latest Final Cut Pro 5.1.2 installed on MacX or Canopus Edius4 on PC or Avid Express Pro on PC/Mac.

Note: Current CitiDISK HDV R1 configuration will record incoming HDV signal in M2T file format only, no matter what DV setting user had set.



Selection of “Capture Format” is mapped as following the RED-GREEN light combinations.

Raw DV (Clipxyy.dv)		Windows AVI2 (Clipxyy.avi)	
QuickTime MOV (Clipxyy.mov)		User Defined **	

Once you’ve made your selection, click “OK” to continue. The “Configuration ROM Editor” menu should reappear. Click “Upload” to save the settings. The updating process starts with the GREEN light OFF and RED light ON for about 5 seconds. After that, the RED light goes off and GREEN light flashes to re-synchronize itself with the system. After the resetting sequence completes, the CitiDISK HD unit will re-appear in the “My Computer” folder. Click on the “X” at the top-right corner of the “FW1256 Firmware Upload Utility v1.92” menu to exit.

The “**Pre-Scene Loop**” function will display with a pre-set number of seconds. For HDV video shooting, it is disabled by firmware.

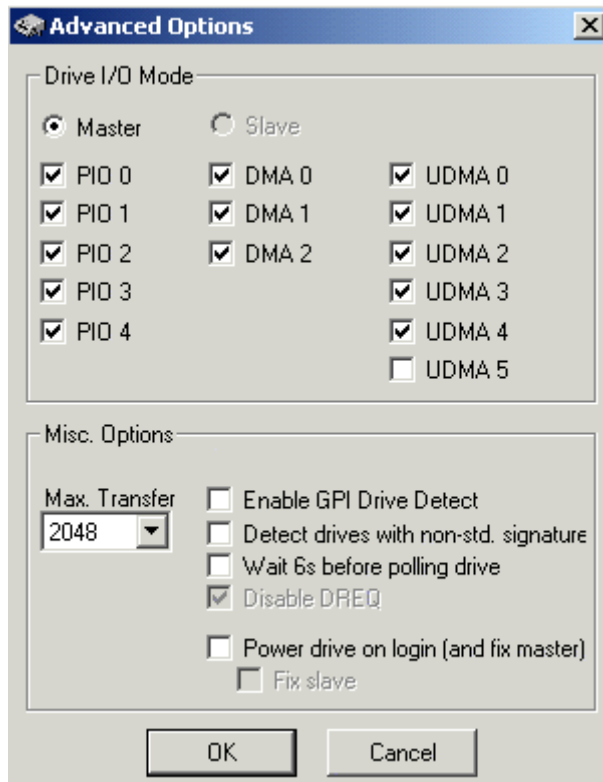
The “**Continue record at tape end**” default option is should already be selected. Deselecting this function will force the CitiDISK unit to stop recording at tape’s or P2 card’s end. “Continue to record at tape end” is useful for long hours of recording when changing the tape is necessary. Users can unload the filled up tape, re-load the new tape and press “REC” button on the camera again to start another new recording without interfering with CitiDISK’s “continuously recording”. The scene will be recorded, uninterrupted, with no footage lost.

The “**Power off the unit in 30 seconds after being ejected**” option is not checked as a default setting. Checking this item will automatically shut the unit off in 30 seconds after it has been ejected from the computer or after it has been left un-connected to the camera or computer for this amount of time.

The “**Turn on recording right after playing the tape**” option is not selected by default. Checking this item will automatically start the CitiDISK’s record function once the tape is played in the VCR mode of the camera.



Clicking on “**Advanced..**” button should display the following screen after you’ve selected the “**Modify device configuration setting**” page.



If the user does not find each setting checked as listed above, he or she is urged to check the settings to match the illustration, and then click “**OK**”. After clicking “**OK**”, the firmware Uploader should return to the “Config ROM Editor” screen. Click on the “**Upload**” button to allow the writing of the new settings to the unit.

